



Hotel access solutions



Access management that's ready when you are

With technology preferences rapidly changing and expectations running high, it's essential to ensure hotel access control that meets industry standards, while delivering guest satisfaction.

Count on Onity to help you lock in the security and access control you need, whether your property is large or small. Onity combines innovative technology and dependable service with decades of experience to provide an advanced electronic locking solution. With Onity, you can pick your path with a cost-effective, scalable and customizable approach. Onity solutions provide reliable locks, streamlined check-in and mobile access—enabling guest convenience and operational efficiencies.

Onity Locks

Security and style on your terms



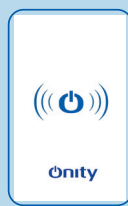
Brilliantly designed yet simple to use, Onity locks make it easy to help protect your property and your guests.

- **Great looks:** Keep today's modern aesthetics top of mind with a variety of options to blend into virtually any decor.
- **DirectKey™ ready:** Get a proven mobile key solution right out of the box—Onity locks are available with an optional DirectKey module, or can be updated on premises when you are ready to make the leap to mobile access.
- **Easy to upgrade:** Ensure the locks you choose are ready for the long run—Onity locks offer straightforward upgrade paths and elegant designs that provide style for years to come.

Options

Credentials

With RFID locks, you can choose from a variety of access credentials, including key fobs, wristbands, mobile devices, and more.



Keycard



Key Fob



Wristband

Levers



Toledo



Granada



Jerez



Barcelona

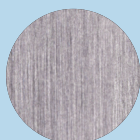


Sevilla

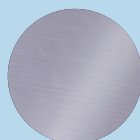


Wing¹

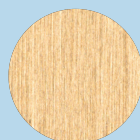
Finishes



Satin
Chrome



Polished
Chrome



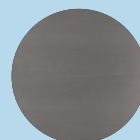
Satin
Brass



Polished
Brass



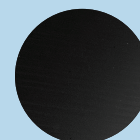
Antique
Brass



Satin
Nickel



Dark
Bronze



Matte
Black

¹ Wing lever designed for ADVANCE two-piece locks and cannot be used on one-piece locks.



Trillium

Trillium® RFID locks:

- With a one-piece design, Trillium radio frequency identification (RFID) locks offer a wide variety of levers and finish options to complement your décor.
- RFID locks enable guests to move faster and more efficiently, and also provide an additional level of reliability compared to magstripe locks.
- Trillium locks provide the option to implement enhanced credential security for RFID keycards by choosing MIFARE Plus® technology.



Trillium ADVANCE

Trillium ADVANCE RFID locks:

- With a two-piece design, Trillium radio frequency identification (RFID) locks offer a wide variety of levers and finish options to complement your décor.
- RFID locks enable guests to move faster and more efficiently, and also provide an additional level of reliability compared to magstripe locks.
- Trillium locks provide the option to implement enhanced credential security for RFID keycards by choosing MIFARE Plus® technology.



Serene

Serene™ luxury locks:

- Serene locks use Bluetooth® technology to stay in a ready state so guests can use a hotel provided mobile app to unlock as they approach the door.
- Onity's DirectKey system protects mobile key credentials using 128-bit AES encryption which provides an additional layer of security on top of locking system features built into Serene locks such as user access permissions and audit trails.
- Serene lock firmware can be upgraded through a firmware utility to optimize lock performance and add new features.

OnPortal™ System

Enterprise Lock Management



The OnPortal system is Onity's latest lock management software: a scalable solution with roving check-in option and full access management. Built on research and feedback from front-desk agents on their routines and challenges, the OnPortal system is designed to deliver optimal efficiency, flexibility and guest satisfaction.

Check-in flexibility:

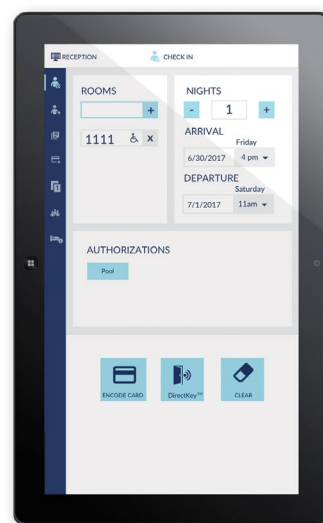
- Enjoy a variety of access management options that match the way you want to run your hotel—physical keycards and mobile keys, front desk and roving check-in, IP encoders and much more.
- Help give your staff the technology they need to better engage your guests when they arrive, such as VIP reception areas and airport greetings.

Consistent performance:

- Easily set up, use and maintain your OnPortal system with software-based functionality—and upgrade legacy hardware on a timeline that works for you.
- Get direct integration with Onity's DirectKey mobile access system, and allow guests to use their smartphone as their room key.

Convenient scalability:

- Let the OnPortal system grow with you. It's right-sized no matter the complexity of your property, small or large.
- Support a range of requirements for full lock management and control for your entire property, from common areas to back-of-house.



Specs to suit you

- Windows®-based—use side-by-side with your PMS system on a desktop PC or in touch-friendly mode on a tablet
- Multi-thread property management system (PMS) interface capabilities
- RFID encoder writes keycards in a snap
- Provides option to validate staff daily and control their access by shift and rooms, groups of rooms or floors
- Multi-sector RFID encoding for better interfacing to third party systems

Space-saving keycard encoding

Compact RFID Encoder:

Onity offers a compact RFID encoder² that works seamlessly with the OnPortal system. Features include:



- 13.56 MHZ / ISO 14443B
- Supports MIFARE Classic®, MIFARE Plus®, MIFARE Ultralight®, MIFARE Ultralight C
- Connects via USB port or via optional IP to USB hub
- Dimensions 3.5" x 2.2" x 0.7" (88mm x 56mm x 18mm)

IP Hub:

The IP hub² enables flexible configurations for fixed and ad-hoc check-in. Staff can create and manage both mobile and physical key credentials.



- Dimensions 4.6" x 2.9" x 1.2" (118mm x 74mm x 30mm)
- Power via separate power supply: 5V, 5A (included)

² Refer to OnPortal system data sheet for additional specs and compliance information

The OnPortal hardware kit is designed for efficiency and flexibility for midscale, economy and independent properties

Our new hardware kit is a plug-and-play, out-of-box system that is delivered ready to go. Easy to set up, use and maintain.

The new hardware kit conveniently includes it all – computer, tablet and touchscreen – and comes pre-loaded with the OnPortal system. Scalable for multiple stations, it includes everything you need to manage your Onity lock system. The hardware kit comes with:

- A high-quality mini PC, foldable laptop/tablet which can be used as an Engineering workstation, touchscreen monitor with a heavy-duty stand, encoder, ethernet switch, portable programmer and all required cables
- Windows 10 and the OnPortal system pre-installed and configured
- Direct integration with Onity's DirectKey mobile access system which allows guests to use their smartphone as their room key remote or onsite
- OnPortal system training is available at an additional cost

Kit includes:



Foldable Laptop/ Tablet



Mini PC



Onity Encoder



Ethernet Switch



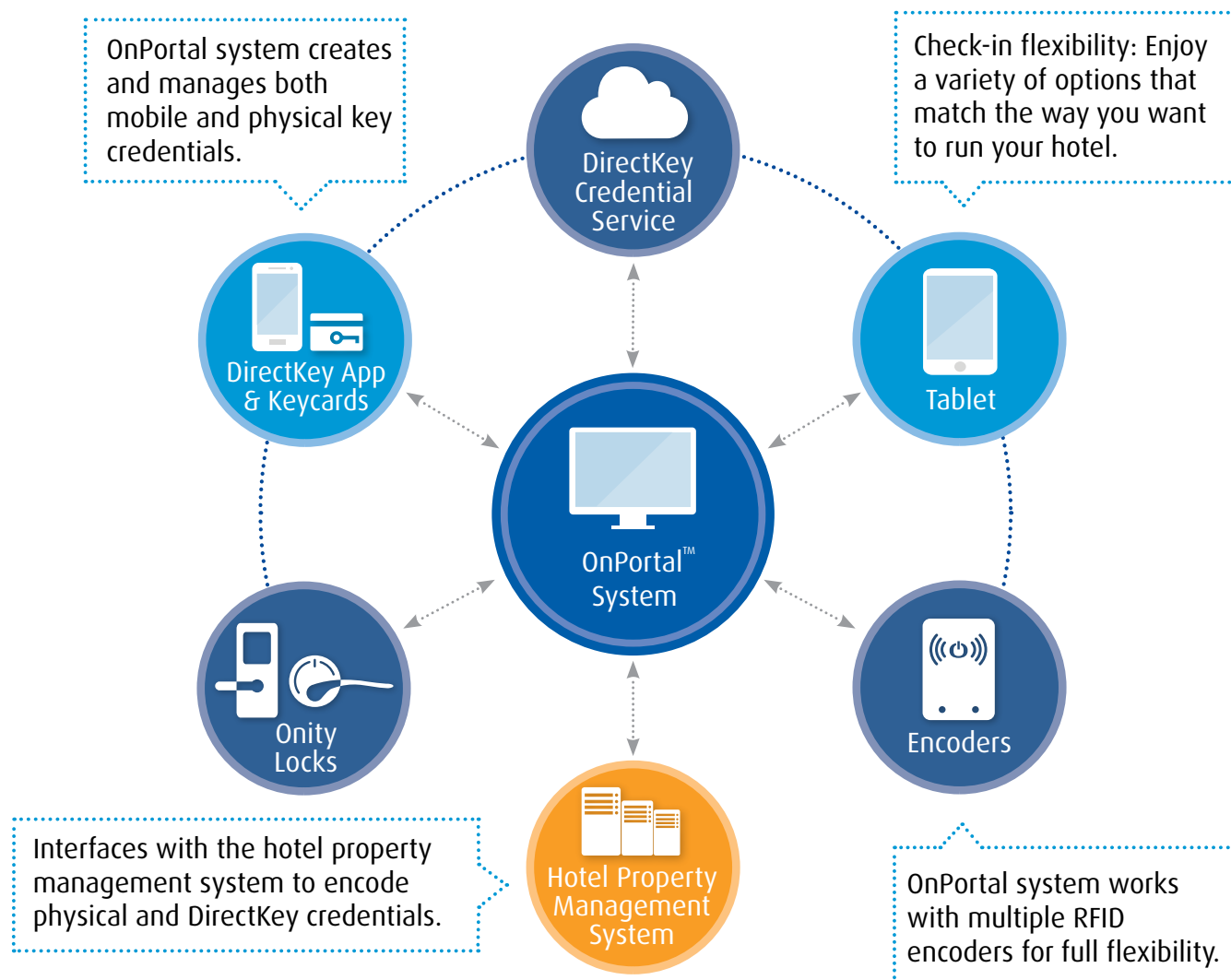
Portable Programmer Adapter



Touchscreen Monitor with stand

Note: images are not to scale

OnPortal system software manages the Onity locks and access control devices for a property



As a trusted leader in proven, reliable electronic locking solutions, Onity is at the forefront of the evolution in security and access control for the hospitality industry. Since 1986, Onity has set the standard with over 5 million electronic locks sold to more than 30,000 hotels around the globe. At Onity, we build lasting relationships to provide the solutions you need for today and tomorrow.

OVER **5** million
electronic
locks sold

OVER **30**
thousand
properties



DirectKey Technology

Mobile access solution

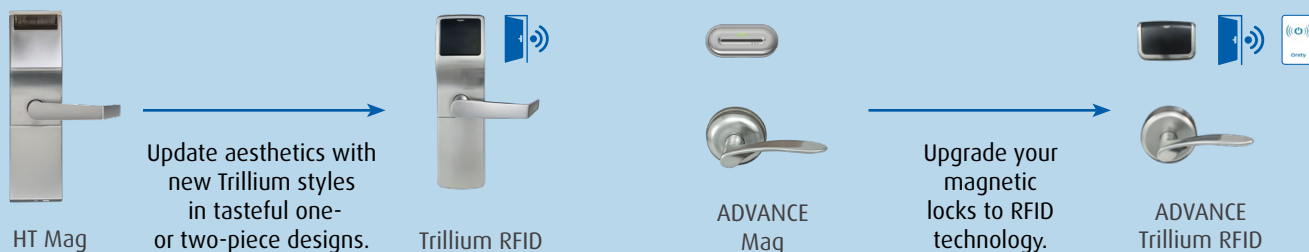
The Onity DirectKey system is a mobile access solution that keeps your guests moving, while helping drive engagement, efficiency and growth. Designed to work alongside Onity Trillium locks, most legacy Onity locking systems and the OnPortal locking system, DirectKey technology helps you better support and satisfy the way your guests want to interact with your property.

- **Superior guest experience:** Enable guests to get in, get out and go almost anywhere, with mobile keys that provide a seamless journey—from parking to elevators to their room.
- **Investment protection:** Save deployment costs and time with a cloud-hosted solution, and preserve your hardware investment with a solution that's easy to retrofit to existing magnetic and RFID locks—or choose DirectKey ready locks right out of the box.
- **Mobile technology expertise:** Rely on a scalable Carrier platform that has been deployed across an installed base of more than 4 million Bluetooth® locking devices in multiple industries.
- **Operational efficiencies:** Track room entry, check battery status and other diagnostics. Lock transmits: guest first entry, guest subsequent entry, staff entry, diagnostics (e.g. battery status), lock open/closed.³

³ Trillium Advance and Serene locks only

Pick your path to upgrade

Trillium locks provide an easy upgrade path where Onity HT and ADVANCE series locks currently are installed—no new door cuts or repainting are required when installing new locks. Pick a path to fit your needs and budget:



Enhanced Security Option: Upgrade at any time from MIFARE Classic® to MIFARE Plus® mode on Trillium RFID locks

Onity Safes

Reliable and secure in-room storage



Onity in-room safes are an excellent choice for hotels looking for a reliable safe designed to securely store laptops, tablets, purses or other valuables. Onity safes feature two solid-steel, anti-drill rotating bolts for mounting, low battery warning and audit tracking.



OS100 Safe with Keypad and Audit Trail

- Budget friendly, easy to use with right hand and top-opening door
- 6-digit red LED display with 3, 4, 5 or 6-digit PIN code options
- ADA compliant keypad and “Code to Close” technology



OS200 Safe with Keypad and Top-Opening Option

- Guest friendly with front-opening and top-opening designs available
- 6-digit green LED display with 3, 4, 5 or 6-digit PIN code options
- ADA compliant keypad and “Code to Close” technology
- Interior carpet and interior light (17” laptop size only)
- Black or white (17” laptop size and top-opening only)



OS500 In-Room Safe with Keypad and Audit Trail

- User friendly with sleek, modern design and front-opening door
- 6-digit blue LED display with 3, 4, 5 or 6-digit PIN code options
- ADA compliant keypad and “Code to Close” technology
- Interior carpet and interior light



OS700 Contactless RFID Card Safe

- Contactless RFID technology allows operation to both guestroom locks and safe using keycards, wristbands or key chains
- Sleek modern design with left- or right-hand front-opening drawer
- Interior carpet
- Black or white



Accessible. Dedicated. There for you.

Onity was founded in 1941 as a mechanical lock manufacturer, and now is one of the world's leading providers of electronic locking systems, while also offering mobile access solutions, energy management products, and room safes.

Onity is part of Carrier, the leading global provider of healthy, safe, sustainable and intelligent building and cold chain solutions.

Onity: let's advance hospitality together.

[LEARN MORE AT ONITY.COM](https://www.onity.com)

